



LDXX-6516DS-VTM

4-port sector antenna, 4x 790–960 MHz, 65° HPBW, RET compatible

- Engineered to provide wideband capability to support “Digital Dividend” band applications, future ready
- Same physical size as existing 800/900 MHz antennas for easy site zoning
- Proven core design technology, with over 1,000,000 similar antennas deployed

Electrical Specifications

Frequency Band, MHz	790–862	824–894	870–960
Gain, dBi	17.5	17.9	17.5
Beamwidth, Horizontal, degrees	70	67	64
Beamwidth, Vertical, degrees	7.9	7.5	7.1
Beam Tilt, degrees	0–8	0–8	0–8
USLS (First Lobe), dB	17	17	17
Front-to-Back Ratio at 180°, dB	30	30	30
CPR at Boresight, dB	24	24	25
CPR at Sector, dB	16	16	12
Isolation, dB	30	30	30
Isolation, Cross Polarization, port to port, dB	30	30	30
VSWR Return Loss, dB	1.4 15.6	1.4 15.6	1.4 15.6
PIM, 3rd Order, 2 x 20 W, dBc	-150	-150	-150
Input Power per Port, maximum, watts	350	350	350
Polarization	±45°	±45°	±45°
Impedance	50 ohm	50 ohm	50 ohm

Electrical Specifications, BASTA*

Frequency Band, MHz	790–862	824–894	870–960
Gain by all Beam Tilts, average, dBi	16.8	17.1	17.3
Gain by all Beam Tilts Tolerance, dB	±0.5	±0.2	±0.4
	0 ° 16.7	0 ° 17.0	0 ° 17.2
Gain by Beam Tilt, average, dBi	4 ° 16.8	4 ° 17.2	4 ° 17.3
	8 ° 16.7	8 ° 17.1	8 ° 17.3
Beamwidth, Horizontal Tolerance, degrees	±3.5	±3.1	±4
Beamwidth, Vertical Tolerance, degrees	±0.4	±0.4	±0.3
USLS, beampeak to 20° above beampeak, dB	17	17	17
Front-to-Back Total Power at 180° ± 30°, dB	26	26	24
CPR at Boresight, dB	24	24	25
CPR at Sector, dB	16	16	12

* CommScope® supports NGMN recommendations on Base Station Antenna Standards (BASTA). To learn more about the benefits of BASTA, [download the whitepaper Time to Raise the Bar on BSAs.](#)

General Specifications

Operating Frequency Band	790 – 960 MHz
Antenna Type	Sector
Band	Single band
Performance Note	Outdoor usage

Mechanical Specifications

RF Connector Quantity, total	4
------------------------------	---

IDXX-6516DS-VTM

RF Connector Quantity, low band	4
RF Connector Interface	7-16 DIN Female
Color	Light gray
Grounding Type	RF connector inner conductor and body grounded to reflector and mounting bracket
Radiator Material	Aluminum
Radome Material	Fiberglass, UV resistant
RF Connector Location	Bottom
Wind Loading, frontal	1436.0 N @ 150 km/h 322.8 lbf @ 150 km/h
Wind Loading, lateral	298.0 N @ 150 km/h 67.0 lbf @ 150 km/h
Wind Loading, rear	2210.0 N @ 150 km/h 496.8 lbf @ 150 km/h
Wind Speed, maximum	241 km/h 150 mph

Dimensions

Length	2567.0 mm 101.1 in
Width	549.0 mm 21.6 in
Depth	165.0 mm 6.5 in
Net Weight, without mounting kit	32.1 kg 70.8 lb

Packed Dimensions

Length	2883.0 mm 113.5 in
Width	659.0 mm 25.9 in
Depth	275.0 mm 10.8 in
Shipping Weight	53.1 kg 117.1 lb

Regulatory Compliance/Certifications

Agency

RoHS 2011/65/EU
China RoHS SJ/T 11364-2006
ISO 9001:2008

Classification

Compliant by Exemption
Above Maximum Concentration Value (MCV)
Designed, manufactured and/or distributed under this quality management system

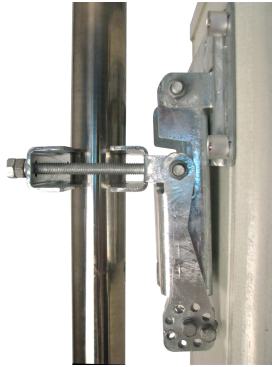


Included Products

BSAMNT-3 — Wide Profile Antenna Downtilt Mounting Kit for 2.4 - 4.5 in (60 - 115 mm) OD round members. Kit contains one scissor top bracket set and one bottom bracket set.

* Footnotes

Performance Note Severe environmental conditions may degrade optimum performance



BSAMNT-3

Wide Profile Antenna Downtilt Mounting Kit for 2.4 - 4.5 in (60 - 115 mm) OD round members. Kit contains one scissor top bracket set and one bottom bracket set.

General Specifications

Application	Outdoor
Includes	Brackets Hardware
Package Quantity	1

Mechanical Specifications

Color	Silver
Material Type	Galvanized steel

Dimensions

Compatible Diameter, maximum	115.0 mm 4.5 in
Compatible Diameter, minimum	60.0 mm 2.4 in
Net Weight	6.2 kg 13.7 lb

Regulatory Compliance/Certifications

Agency

RoHS 2011/65/EU
China RoHS SJ/T 11364-2006
ISO 9001:2008

Classification

Compliant by Exemption
Above Maximum Concentration Value (MCV)
Designed, manufactured and/or distributed under this quality management system

