

Installation Instructions

Identifying Connector Ports and Tilt Adjusters for Dual/Tri Band Antennas

Andrew Solutions offers installation training.

GENERAL INFORMATION

The illustrations shown in this bulletin assist in identifying the connector ports and the variable electrical tilt adjusters for multi-port/variable tilt antennas. The antennas are also labeled to provide the most accurate guideline for installation.

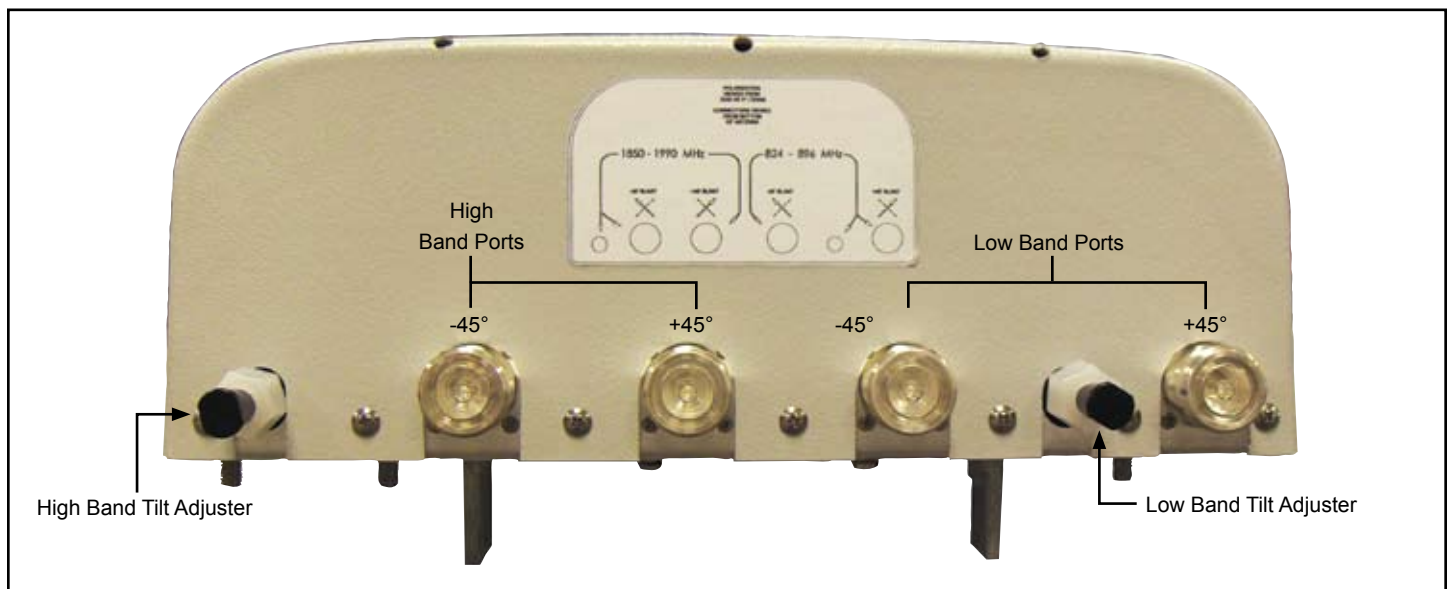


Figure 1. DBXCP-4545A-VTM DualPol[®] Dual Band Antenna, Bottom View.

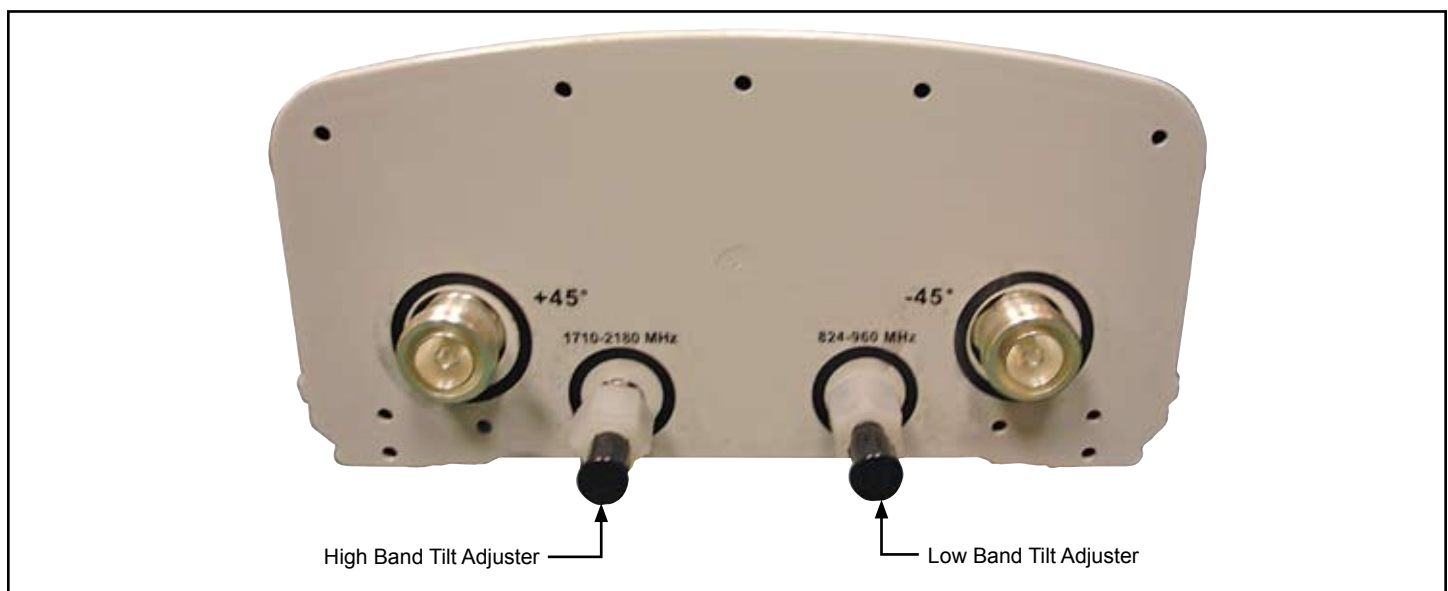


Figure 2. DBXLHC-6565(A/C)-VTM DualPol[®] Dual Band Antennas, Bottom View.

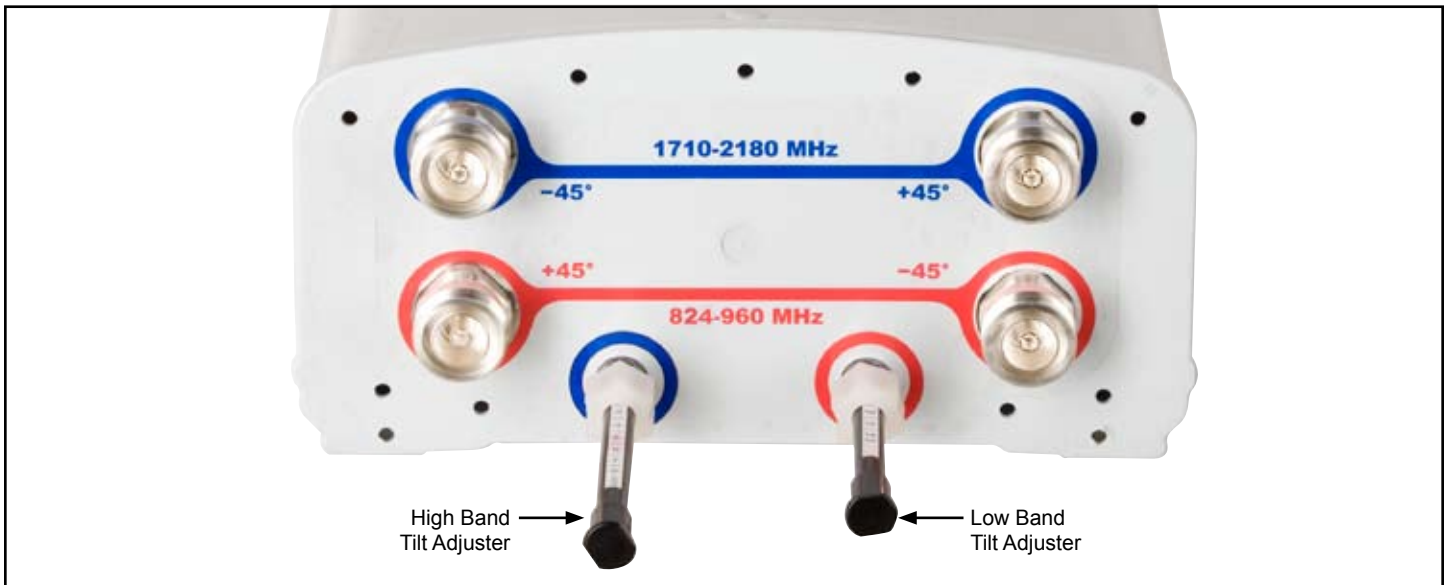


Figure 3. DBXLH-6565(A/B/C/D/EC)-VTM DualPol® Dual Band Antennas, Bottom View.



Figure 4. DBXH2-6565A-VTM DualPol® Dual Band Antennas, Bottom View.

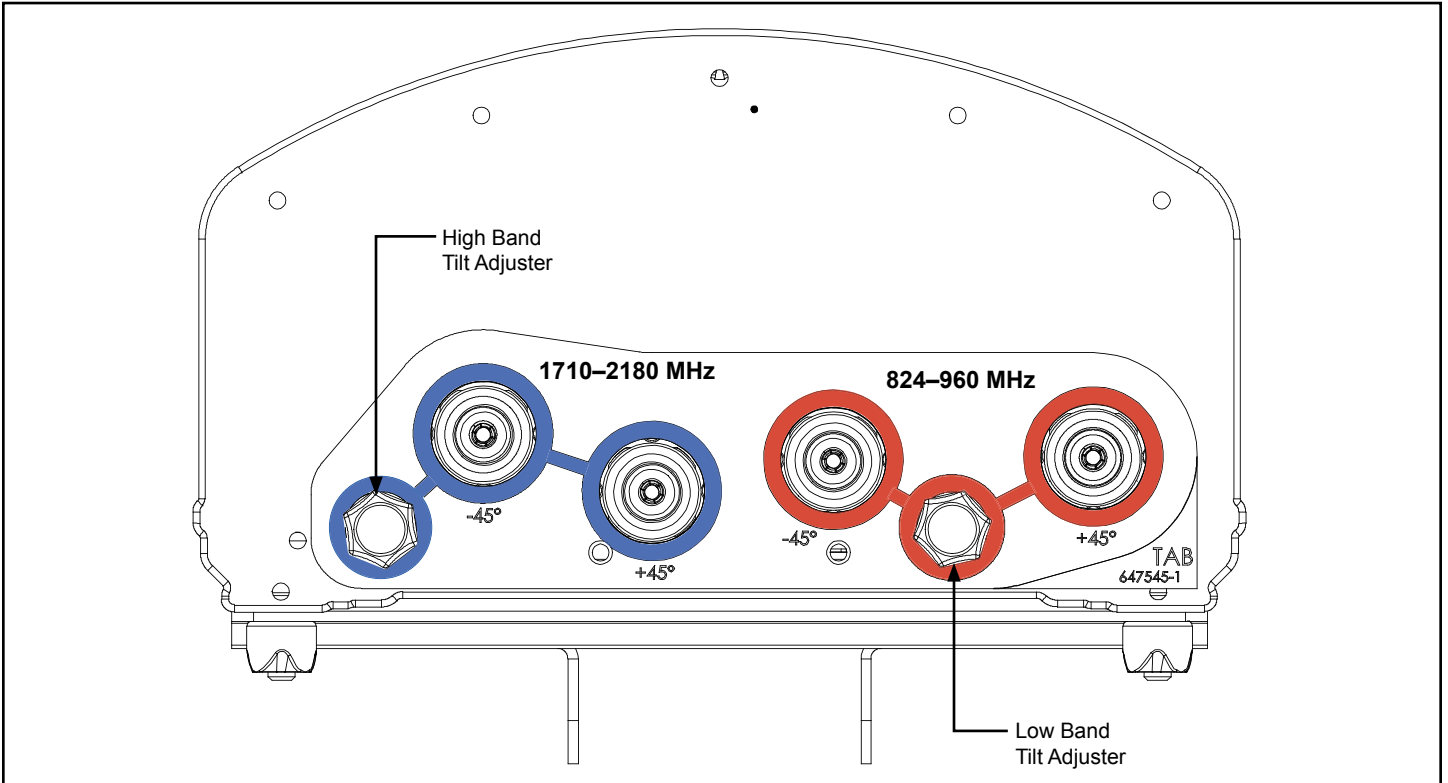


Figure 5. DBXLH-8585(A/B)-VTM DualPol® Dual Band Antennas, Bottom View.

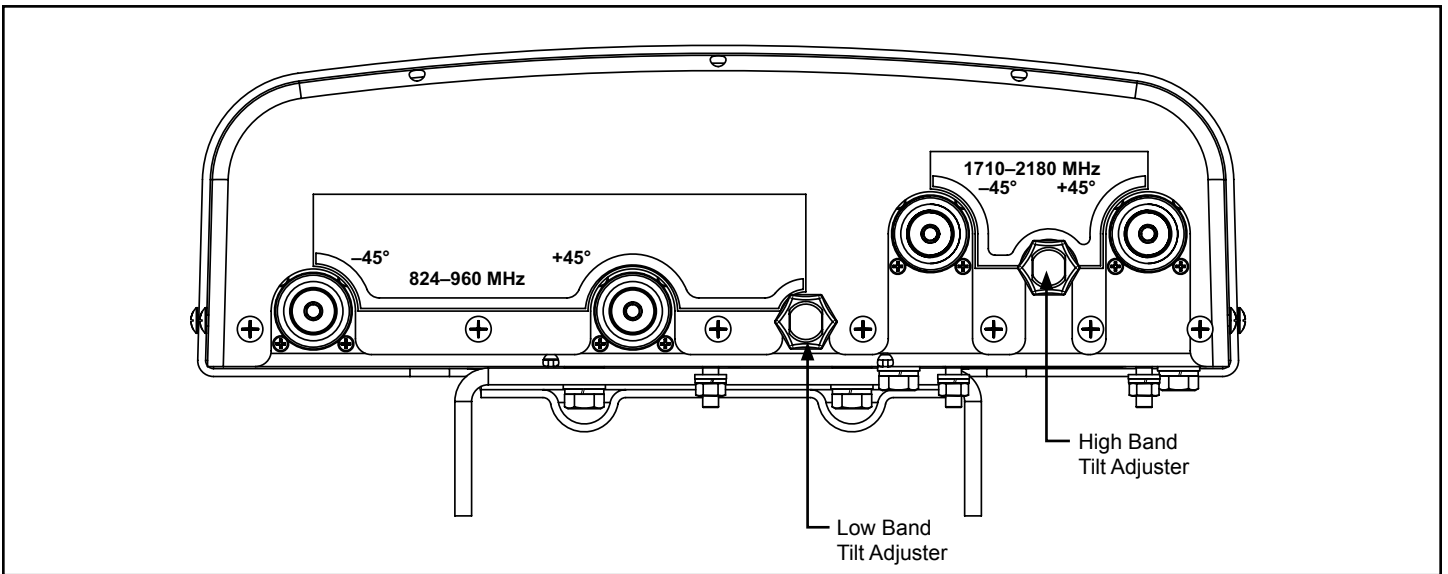


Figure 6. DBXLH-9090C-VTM DualPol® Dual Band Antenna, Bottom View.

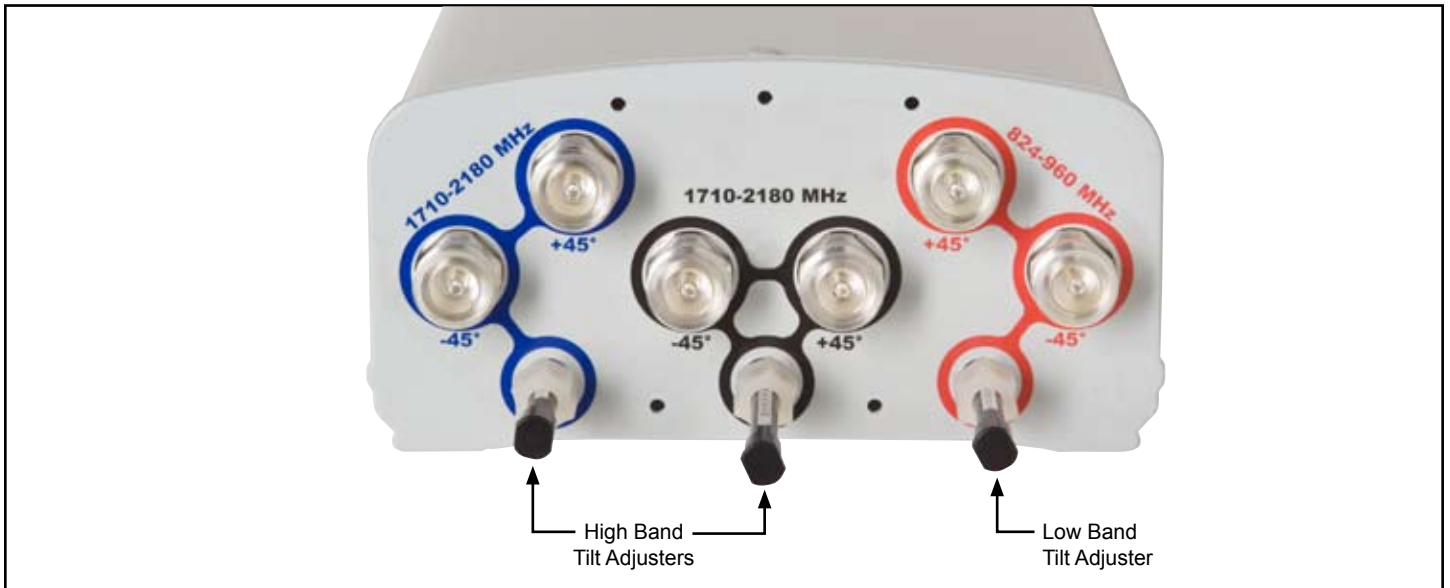


Figure 7. TBXLHA-6565(B/C)-VTM DualPol® Tri Band Antennas, Bottom View.

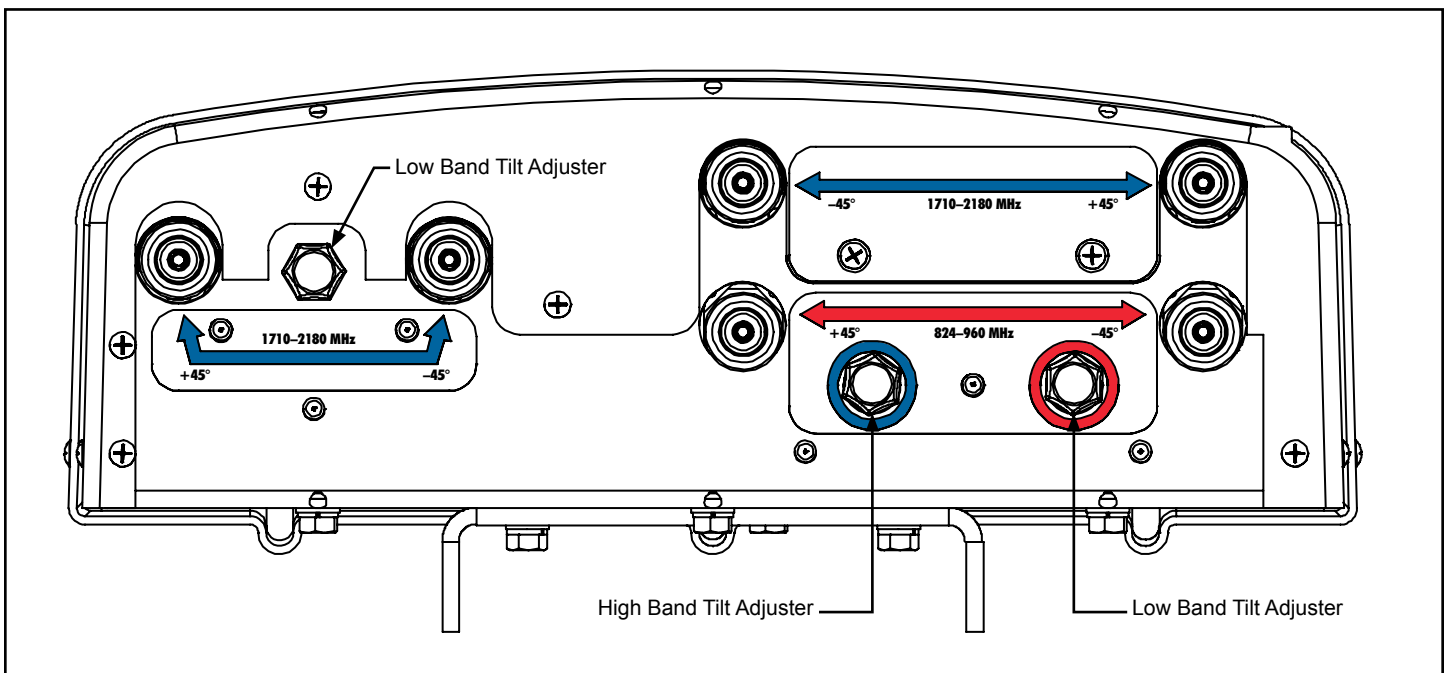
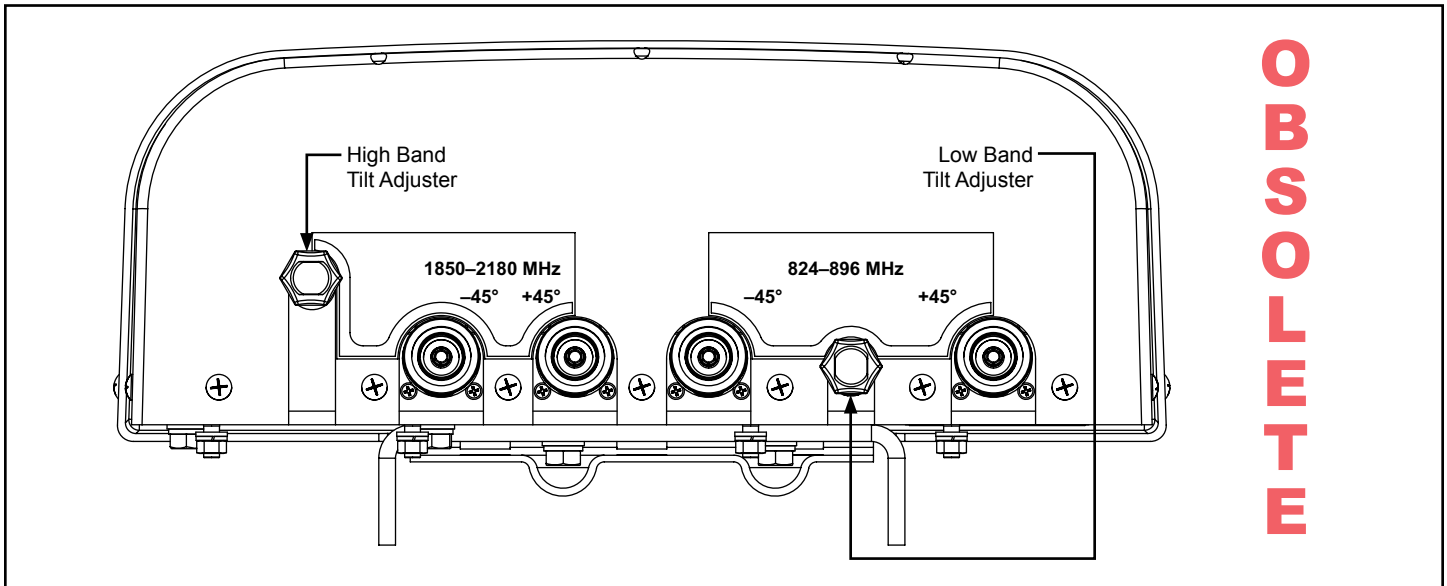
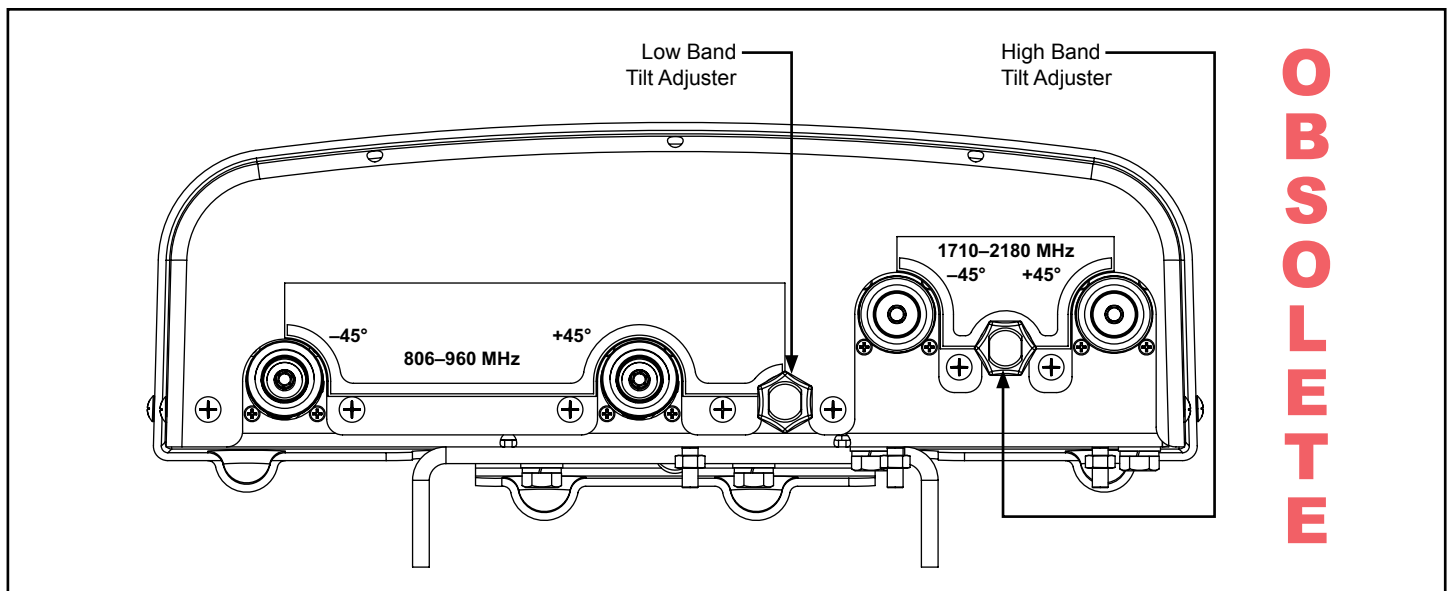


Figure 8. TBXLHB-6565A-VTM DualPol® Tri Band Antenna.



OBSOLETE

Figure 9. DBXLH-9090A-VTM DualPol® Dual Band Antenna, Bottom View.



OBSOLETE

Figure 10. DBXLH-9090B-VTM DualPol® Dual Band Antenna, Bottom View.

NOTICE

The installation, maintenance, or removal of an antenna requires qualified, experienced personnel. Andrew installation instructions are written for such installation personnel. Antenna systems should be inspected once a year by qualified personnel to verify proper installation, maintenance, and condition of equipment.

Andrew disclaims any liability or responsibility for the results of improper or unsafe installation practices.



Do not install near power lines. Power lines, telephone lines, and guy wires look the same. Assume any wire or line can electrocute you.



Do not install on a wet or windy day or when lightning or thunder is in the area. Do not use metal ladder.



Wear shoes with rubber soles and heels. Wear protective clothing including a long-sleeved shirt and rubber gloves.

**Andrew, A CommScope Company
Customer Support Center**

North America: +1-800-255-1479
International: +1-779-435-6500

www.commscope.com/andrew.com

Visit our Web site at www.commscope.com or contact your local Andrew representative for more information.

© 2009 CommScope, Inc. All rights reserved.

Andrew is a trademark of CommScope. All trademarks identified by ® or ™ are registered trademarks or trademarks, respectively, of CommScope. This document is for planning purposes only and is not intended to modify or supplement any specifications or warranties relating to Andrew products or services.