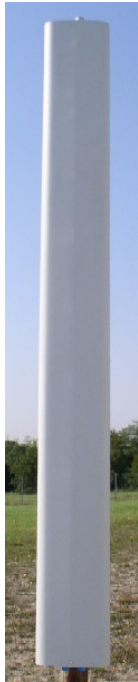


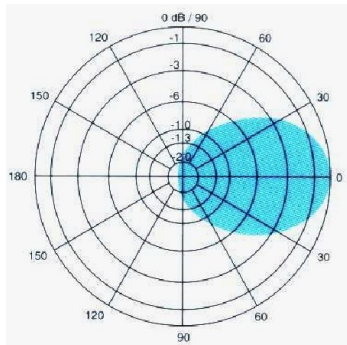
- 5265101 -



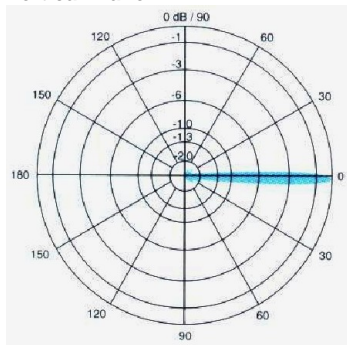
5265101



Horizontal Plane



Vertical Plane



65° DUAL POLAR PANEL ANTENNA 870 - 960 Mhz

This full sized panel is designed for use on the GSM 900 Band & is offered with variable electrical downtilt.

Type	5265
Product Code	5265101
Frequencies (MHz)	870-960
Gain (dBi)	17,5
Maximum Power (Watts)	200 (Each port)
Polarisation	± 45°
VSWR	<1.4 : 1
Electrical tilt	0° to 10° continuously ajustable via mechanical control at the bottom
Horizontal Beamwidth (-3 dB)	65° (± 5°)
Vertical Beamwidth (-3 dB)	7°
Front to back Ratio (dB)	> 30
Upper side lobe levels (dB)	Better than 18
Null Fill (dB)	Better than 22
Isolation between ports (dB)	>30
Termination	2 x 7/16 type female bottom face of housing
Materials	Shroud : Outdoor plastic Housing : Aluminium
Dimensions mm	2690 x 287 x 115
Weight (kg)	17 (Exc. Brackets)
Tube Clamp Weight (kg)	5,8
Windloading @45m/s (N)	900

Installation: On pipe of 48 to 115 mm in diameter with clamp 0900393/00. An additional accessory adds mechanical down tilt or up tilt with continuous adjustment from 0° to 10°. These accessories must be ordered separately.

Notes : The mechanical control of the electrical tilt does not add any additional length at the bottom of the antenna. When the optional remote control of the electrical tilt is installed, it fits completely inside the antenna base and do not add any additional length to the above dimensions. The remote controlled antenna still has the manual control capability and the tilt angle indicators.