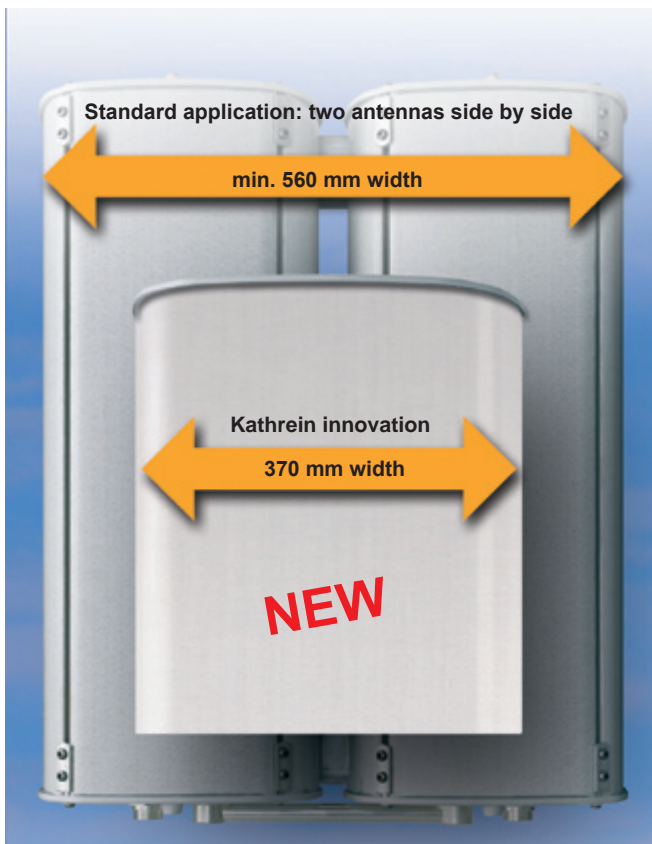




UMTS 900 (850) Products

**UMTS 900 Antennas, Filters,
Combiners and Amplifiers
from the World's largest
Antenna Supplier**



- New Antenna Products
- Slim 2-in-1 solutions
- System Components for all purposes

KATHREIN

Antennen · Electronic



UMTS 900 (850) Products

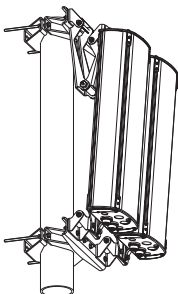
XPol Panels

- ▶ XPol technology
- ▶ Broadband solution 850/900 MHz
- ▶ 33°/65°/88° half-power beam width
- ▶ Fixed or adjustable downtilt
- ▶ Best gain values with shortest length
- ▶ 100% tested VSWR, isolation and intermodulation performance
- ▶ Special mechanical strength



2 x Panel Mounting Kit

- ▶ Existing GSM antennas may be reused
- ▶ Adding a new UMTS panel on a 2 x panel mounting kit
- ▶ Additional mechanical downtilt possible





UMTS 900 (850) Products

New UMTS 900/GSM side-by-side in a common radome

- ▶ Narrow width (only 370 mm)
compared to 560 mm of two standard
antennas
- ▶ Individual adjustable downtilt
- ▶ Possibility for Tx diversity
- ▶ Double XPol technology
- ▶ Available versions:
2 x 65 half-power beam width
2 x 88 half-power beam width



• Slimmest solution on the market

KATHREIN

Antennen · Electronic



UMTS 900 (850) Products

Dualband Antennas

- ▶ Double XPol technology
- ▶ Fixed and adjustable downtilts
- ▶ Combination with 1800 MHz and/or UMTS
- ▶ 65° and 90° half-power beam widths

Tripleband Antennas

- ▶ Triple XPol technology
- ▶ Individual adjustable downtilts
- ▶ Combination with 1800 MHz and UMTS
- ▶ Stacked and gain-optimized versions





UMTS 900 (850) Products

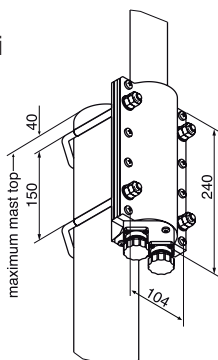
VPol Panels

- ▶ VPol technology
- ▶ Broadband solution 850/900 MHz
- ▶ 20°/51°/65°/90°/120° half-power beam widths
- ▶ Fixed and adjustable downtilts
- ▶ Best gain values at shortest length
- ▶ 100% tested VSWR and intermodulation performance
- ▶ Special mechanical strength



VPol Omnis

- ▶ Gain values 2/5/8/11 dBi
- ▶ Special strong lightning protection
- ▶ Low tip deflection
- ▶ Several dual-band versions available





UMTS 900 (850) Products

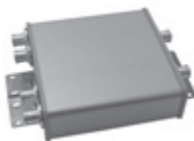
System Components

- ▶ 3 dB Couplers



- ▶ Hybrid Combiners

- ▶ Duplex Hybrid Combiners



- ▶ Decoupled Power Splitters

- ▶ Fullband Double Dual
Duplexer TMA/MHA



• Special low intermodulation values



UMTS 900 (850) Products



Network planning is becoming ever more complicated, especially with the advent of 3G. The challenge for wireless network operators is to balance coverage, capacity, call quality and costs, in order to gain maximum revenue from their network. The possibility of coverage adjustment through the vertical antenna pattern is a very important aspect for mobile communication planners. Kathrein's Remote Electrical Tilt (RET) system represents the latest antenna system technology.



RET system components:

- ▶ Central Control Unit (CCU)
- ▶ Portable Control Adapter (PCA)
- ▶ Remote Control Unit (RCU)
- ▶ DC power and signal splitter
- ▶ Control cables
- ▶ Lightning Protection Device (LPD)
- ▶ Earthing clamp

Optional:

- ▶ Bias Tee/Smart Bias Tee
- ▶ Double Tower Mounted Amplifier (DTMA)



The Kathrein Group

Kathrein is an international enterprise active in antenna and communications technology. For more than 90 years our group of companies has been developing, producing and marketing a wide range of antenna systems and electronic components. Always being one step ahead in technology has ensured that Kathrein is the leading company in the world market.

More Information?

Visit our website
<http://www.kathrein.de>

Contact address

Head office

KATHREIN-Werke KG
Anton-Kathrein-Straße 1-3
83004 Rosenheim/Germany
Telephone: +49 8031 184-0
Fax: +49 8031 184-973
mobilcom@kathrein.de

Our representative

