

6878200

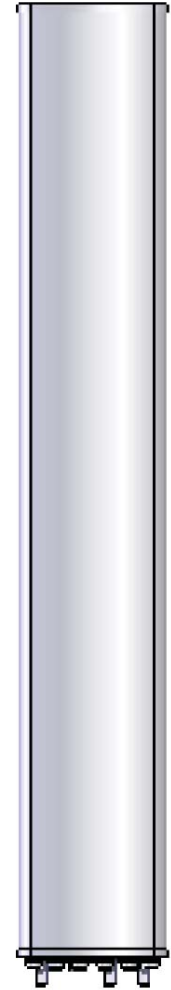
Tri Band | Panel Antenna | XXX-Pol | 65° | 16.5 / 18.6 / 18.6 dBi | Variable Tilt

- Tri band, XXX-Pol, variable tilt, panel antenna, 6 connectors
- Independent tilt on each band 0-10° / 0-10° / 0-10°
- UltraLine platform with multi-array capability
- MET and RET versions, AISG v1.1 or 3GPP/AISG v2.0
- Single RET module to control all tilt angles, fully inserted inside the antenna (field replaceable)

Ordering Options	Model Number
Manual Electrical Tilt	6878200
Remote Electrical Tilt AISG v1.1	6878200A
Remote Electrical Tilt AISG v2.0 / 3GPP	6878200G

Mounting bracket kits and other accessories are ordered separately.



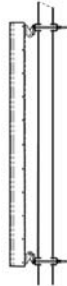

Electrical Characteristics		Low Band (Red)	Wide Band (Blue)		Ultra Wide Band (Yellow)		
Frequency Bands (MHz)		790...880...960	1710...1880	1900...2170	1710...1880	1900...2170	2500...2690
Polarization		±45°	±45°		±45°		
Horizontal Beamwidth		66° (±6°)	67° (±3°)	64° (±4°)	67° (±3°)	64° (±4°)	60° (±3°)
Vertical Beamwidth		9°	5.7°	4.9°	5.5°	5.0°	4.0°
Gain	Tilt 0°	15.5...16.0...16.5	17.8...18.2	18.2...18.6	17.6...17.9	17.9...18.4	18.3...18.6
	Tilt 5°	15.5...16.0...16.5	17.7...18.0	18.0...18.5	17.5...17.7	17.7...18.2	18.0...18.2
	Tilt 10°	15.4...15.9...16.4	17.6...17.8	17.8...18.3	17.5...17.6	17.6...18.0	17.7...17.8
Electrical Downtilt		0-10°		0-10°			
Impedance		50Ω		50Ω			
VSWR		< 1.5		< 1.5			
Upper Sidelobe Suppression (typical) (20° sector above main beam)		18 dB		18 dB			
Front-to-Back Ratio		> 30 dB		> 30 dB			
Isolation Between Bands (inter-band, typical)		45 dB		45 dB			
Isolation Between Ports (intra-band)	Tilt 0°-2°	> 28 dB		> 28 dB			
	Tilt 3°-10°	> 30 dB		> 30 dB			
IM3 (2x20W carrier)		< -110 dBm		< -110 dBm			
Input Power		200 W		160 W			
Total Number of Connectors		Antennas has 6 connectors located at the bottom					
Connectors Per Band, Type, Location	790-960 MHz	2 Connectors / 7/16-DIN Female Long Neck / Bottom / Red Rings					
	1710-2170 MHz	2 Connectors / 7/16-DIN Female Ultra Long Neck / Bottom / Blue Rings					
	1710-2690 MHz	2 Connectors / 7/16-DIN Female Ultra Long Neck / Bottom / Yellow Rings					
Diplexed		No					
Lightning Protection		Direct Ground					
Operating Temperature		-40° to +60° C (-40° to +140° F)					
Mechanical Characteristics							
Shroud		Outdoor Plastic, Grey RAL7035					
Dimensions (Length x Width x Depth)		1914 x 305 x 162 mm		75.4 x 12.0 x 6.4 in			
Weight without Mounting Brackets		28 kg		61.7 lbs			
Operational Wind Speed		160 km/hr		100 mph			
Survival Wind Speed		200 km/hr		124 mph			
Wind Loads (160 km/hr or 100 mph)	Front	870 N		196 lbf			
	Lateral	396 N		89 lbf			
	Rear	852 N		192 lbf			



Quoted performance parameters are provided to offer typical or range values only and may vary as a result of normal manufacturing and operational conditions. Extreme operational conditions and/or stress on structural supports is beyond our control. Such conditions may result in damage to this product. Improvements to product may be made without notice.

6878200

Tri Band | Panel Antenna | XXX-Pol | 65° | 16.5 / 18.6 / 18.6 dBi | Variable Tilt

Environmental Characteristics				
Environmental	ETS 300 019			
RoHS Compliant	Yes			
Electrical Downtilt Control				
Electrical downtilt for each band can be controlled separately. Tilt indicator(s) are covered by removable transparent cap(s).				
Manual Electrical Tilt (MET) Control	A colored knob at the end of the tilt indicator allows change of the tilt without need of a tool. The knob color is identical to the corresponding connector ring color. To access the knob, remove the cap by turning it counter-clockwise. It is re-installed by opposite rotation. Do not remove the transparent cap(s) from the antenna.			
Remote Electrical Tilt (RET) Control	The remote control of the electrical tilt is managed by a module (MDCU) totally inserted at the bottom of the antenna. One single module controls individually the tilt of each band (no need of daisy chain cables between the bands). This module does not add any additional length at the bottom of the antenna. For RET control, the transparent cap must be in place and locked. The tilt angle indicator always remains visible and the antenna still has manual tilt control (manual override).			
RET Module	The RET module is factory installed and does not need to be ordered separately.			
	Part Number for AISG v1.1 protocol:	MDCU-A0000	One unit installed in 6878200A	
	Part Number for 3GPP/AISG v2.0 protocol:	MDCU-G0000	One unit installed in 6878200G	
Important Installation Instructions		In order to operate RET control, the transparent caps covering the tilt adjustment indicators must be engaged and locked. Do not cut them from the antenna.		
		Do not install the antenna with the connectors facing upward.		
Mounting Options	Part Number	Image	Fits Pipe Diameter	Weight
All mounting bracket kits are ordered separately unless otherwise indicated. Select from the options listed below.				
2-Point Mounting Bracket Kit	0900181/00		50-115 mm 2.0-4.5 in	4.1 kg 9 lbs
2-Point Mounting & Downtilt Bracket Kit	0900182/00		70-150 mm 2.8-5.9 in	3.9 kg 8.6 lbs
Downtilt Bracket Kit (for use with above mounting bracket kits)	0900397/00		---	3 kg 8.6 lbs

Quoted performance parameters are provided to offer typical or range values only and may vary as a result of normal manufacturing and operational conditions. Extreme operational conditions and/or stress on structural supports is beyond our control. Such conditions may result in damage to this product. Improvements to product may be made without notice.

6878200

Tri Band | Panel Antenna | XXX-Pol | 65° | 16.5 / 18.6 / 18.6 dBi | Variable Tilt


Packaging		
Carton Dimensions (Length x Width x Depth)	2170 x 400 x 280 mm	85.4 x 15.7 x 11.0 in
Carton Volume	0.243 m ³	8.6 ft ³
Carton Weight	33 kg	72.8 lbs

Bottom View of Antenna

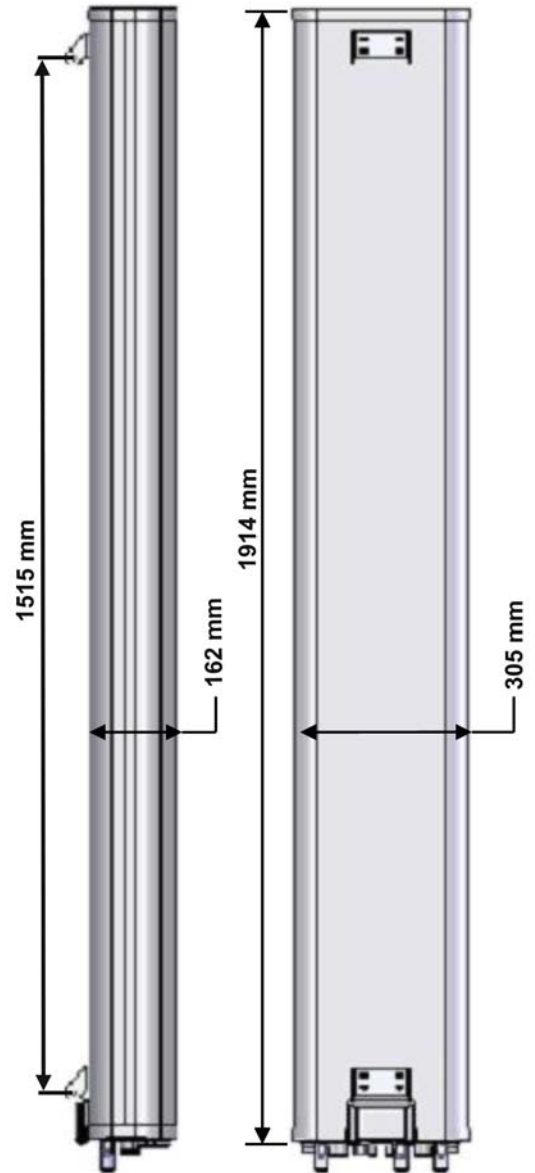


Location of the MDCU for RET Control

Tilt indicators covered by transparent caps. Manual adjustment is accessed by removing the caps. Knob colors are the same as the connectors.

 In order to operate RET control, the transparent caps covering the tilt adjustment indicators must be engaged and locked. Do not cut them from the antenna.

Dimensions

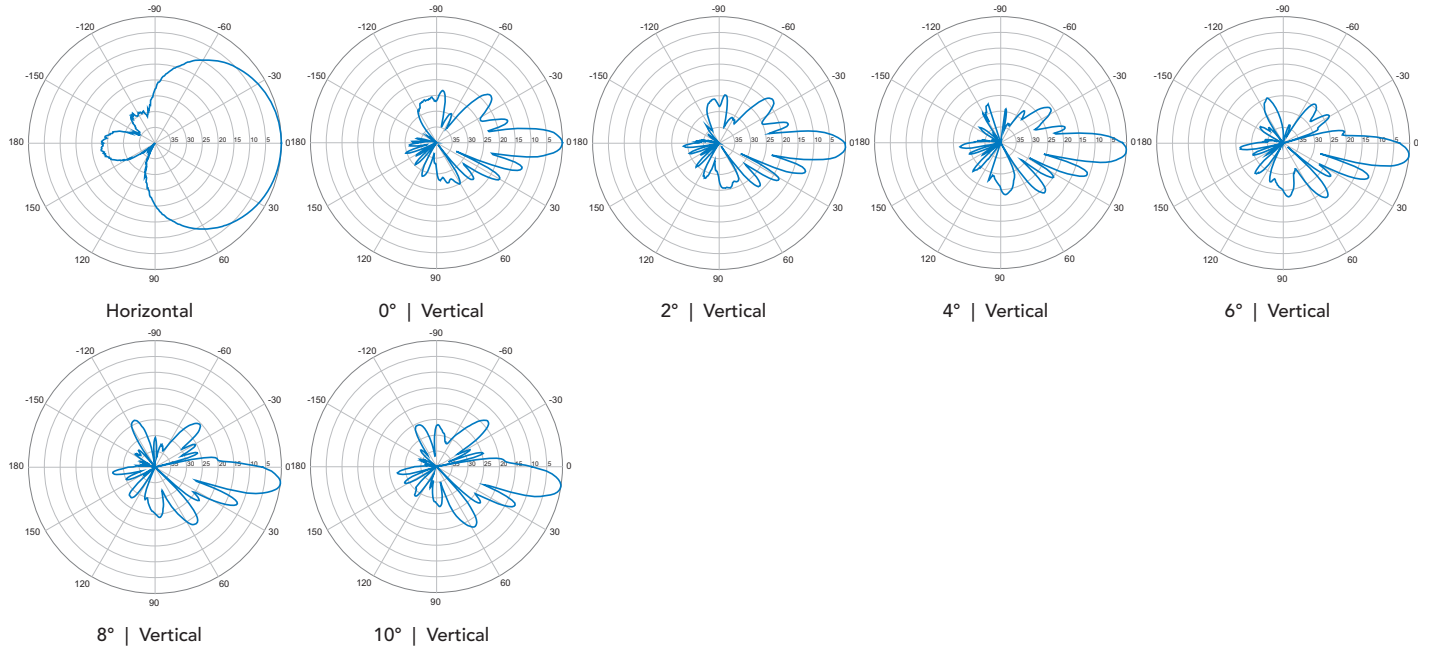


Quoted performance parameters are provided to offer typical or range values only and may vary as a result of normal manufacturing and operational conditions. Extreme operational conditions and/or stress on structural supports is beyond our control. Such conditions may result in damage to this product. Improvements to product may be made without notice.

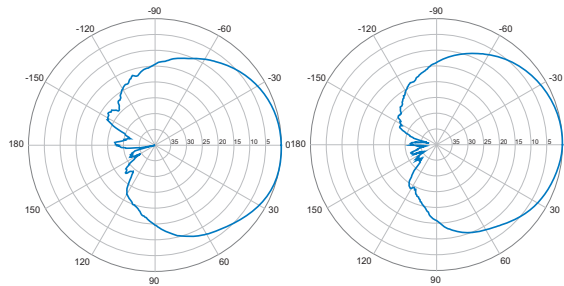
6878200

Tri Band | Panel Antenna | XXX-Pol | 65° | 16.5 / 18.6 / 18.6 dBi | Variable Tilt

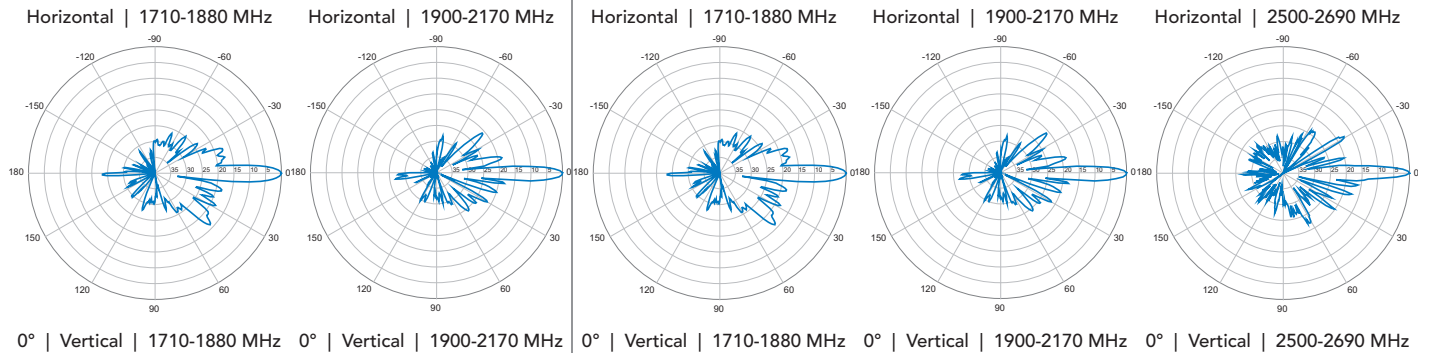
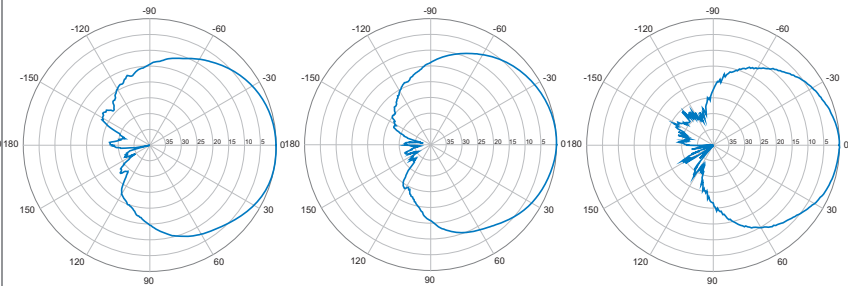
790-960 MHz Extended Low Band Red



1710-2170 MHz Wide Band Blue



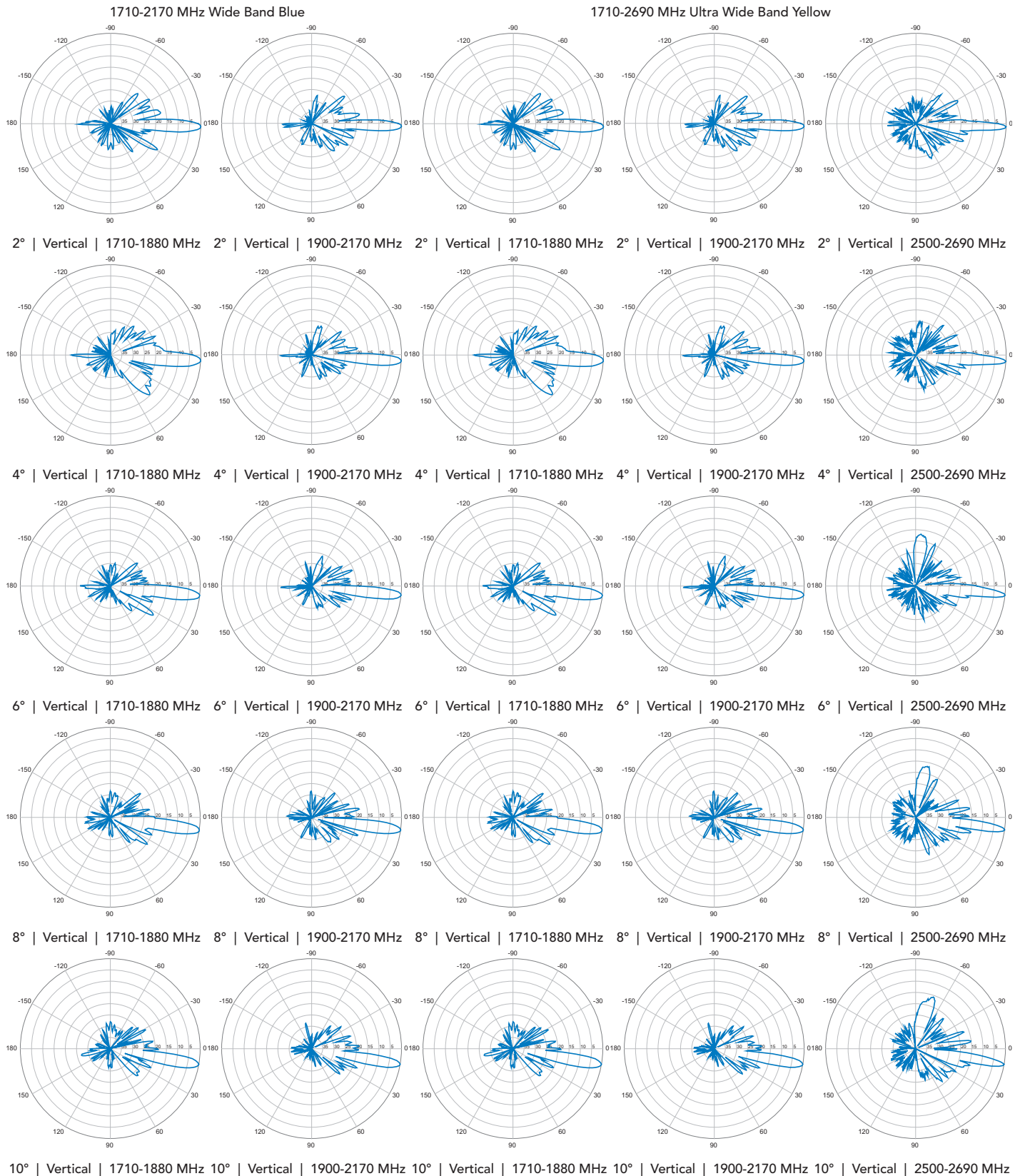
1710-2690 MHz Ultra Wide Band Yellow



Quoted performance parameters are provided to offer typical or range values only and may vary as a result of normal manufacturing and operational conditions. Extreme operational conditions and/or stress on structural supports is beyond our control. Such conditions may result in damage to this product. Improvements to product may be made without notice.

6878200

Tri Band | Panel Antenna | XXX-Pol | 65° | 16.5 / 18.6 / 18.6 dBi | Variable Tilt



Quoted performance parameters are provided to offer typical or range values only and may vary as a result of normal manufacturing and operational conditions. Extreme operational conditions and/or stress on structural supports is beyond our control. Such conditions may result in damage to this product. Improvements to product may be made without notice.