

A704516R0

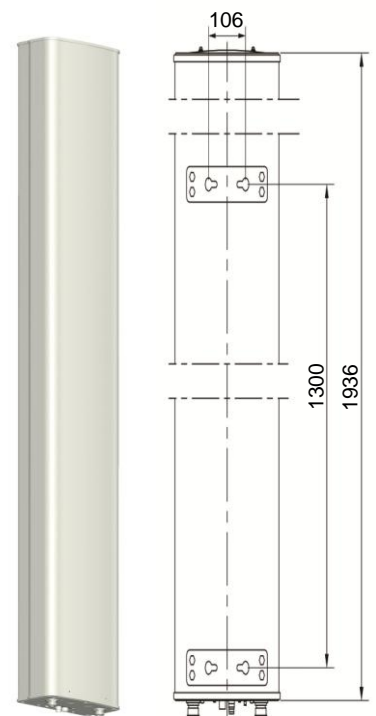
DX-690-960-65-16.5i-M-R
EasyRET Single-Band Antenna with Integrated RCU - 2.0m



Antenna Specifications

Electrical Properties												
Frequency range (MHz)	690 - 960											
	690 - 803			790 - 862			824 - 894			880 - 960		
Polarization	+45° , -45°											
Electrical downtilt (°)	0 - 12 , continuously adjustable											
Gain (dBi)	0°	6°	12°	0°	6°	12°	0°	6°	12°	0°	6°	12°
	15.4	15.5	15.2	15.8	15.9	15.5	16.0	16.1	15.7	16.1	16.4	15.8
Side lobe suppression for first side lobe above main beam (Typ.) (dB)	0°	6°	12°	0°	6°	12°	0°	6°	12°	0°	6°	12°
	18	17	15	16	17	15	16	17	15	16	17	15
Horizontal 3dB beam width (°)	69			68			67			65		
Vertical 3dB beam width (°)	11.3			10.3			9.8			9.2		
VSWR	< 1.5											
Isolation between ports (dB)	≥ 30											
Front to back ratio, copolar (dB)	Typ. 28											
Cross polar ratio (dB)	0°	Typ. 18										
	±60°	Typ. 10										
Max. power per input (W)	500 (at 50°C ambient temperature)											
Intermodulation IM3 (dBc)	≤ -153 (2 x 43 dBm carrier)											
Impedance (Ω)	50											
Grounding	DC Ground											

Mechanical Properties	
Antenna dimensions (H x W x D) (mm)	1936 x 298 x 149
Packing dimensions (H x W x D) (mm)	2365 x 360 x 230
Antenna weight (kg)	15.5
Clamps weight (kg)	2.9 (2 units)
Antenna packing weight (kg)	26.0 (Included clamps)
Mast diameter supported (mm)	50 - 115
Radome material	Fiberglass
Radome colour	Light grey
Operational temperature (°C)	-40 .. +65
Wind load (N)	Frontal: 810 (at 150 km/h) Lateral: 345 (at 150 km/h) Rear side: 970 (at 150 km/h)
Max. operational wind speed (km/h)	150
Survival wind speed (km/h)	200
Connector	2 x 7/16 DIN Female
Connector position	Bottom



Accessories

Item	Model	Description	Weight	Units per antenna
Downtilt kit	ASMDT0C01	Mechanical downtilt: 0 - 12 °	1.9 kg	1 (Separate packing)

A704516R0

DX-690-960-65-16.5i-M-R
EasyRET Single-Band Antenna with Integrated RCU - 2.0m



Integrated RCU Specifications

Properties								
RET type	Integrated RET							
RET protocols*	AISG 2.0 / 3GPP							
Input voltage range (V)	10 - 30 DC							
Power consumption (W)	< 5 (motor activated, 12V) < 1.5 (stand by, 12V)							
Adjustment time (full range) (s)	< 50 (typically, depending on antenna type)							
RET connector	2 x 8 pin connector according to IEC 60130-9 Daisy chain in: Male / Daisy chain out: Female							
Pin assignment according AISG	1	2	3	4	5	6	7	8
	DC	n/c	RS-485B	n/c	RS-485A	DC	DC return	n/c
Lightning protection (kA)	3 (10/350 μ s) 10 (8/20 μ s)							

* Please confirm the AISG protocol of primary station is compatible with RET antenna protocol interface. The protocol of RET antenna software interface is switchable between AISG 2.0/3GPP and AISG 1.1 with a vendor defined command. For more details about protocol switching function, contact Huawei before system installation.

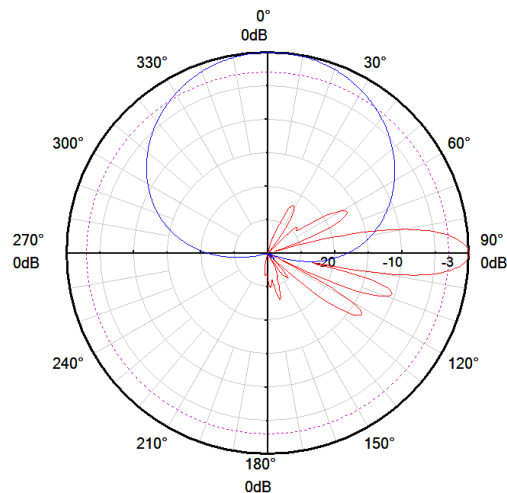
Standards: EN 60950-1 (Safety), EN 55022 (Emission), EN 55024 (Immunity), ETSI EN300386 (1.4.1), FCC part15

Certification: CE, FCC, RoHS, WEEE



Integrated RCU S/N: **a** HWMxxx.....r

r - Red



690 - 960 MHz