

User's Guide for BiBUnit (v1.1)



Date: 13 March 2007
Ref: DOC-0307210-U1

Table of Contents

1. Initial Set-up:	2
2. Registering the BiBUnit application:	3
3. Change Callers:	4
➤ Modify Caller	4
➤ Add New Caller	5
➤ Delete Caller	5
4. Access Type:	6
➤ Restricted Access	6
➤ Un-restricted (Public) Access	6
5. Auto-Run:	7
6. Help:	8
7. About:	8
8. Recommendations:	9
9. Limitations:	11
10. Technical Details:	12
11. Contact Details:	12

User's Guide for BiBUnit (v1.1)

For Nokia mobile phones, models: 6630, 6680, N70 & N90

1. Initial Set-up:

Note: If you have not installed BiBUnit on your mobile phone yet, please follow the steps explained in "Installation Instruction for BiBUnit (v1.1)" document (Ref: DOC-0307209) prior to following the steps in this document.

- 1.1. Select "**BiBUnit**" application from the installed application section on your mobile phone and run it.

- 1.2. If you have not registered the application yet, and you are within the trial period of using this application, you will see the trial period pops up on your mobile phone's display (Fig. 1).



Fig. 1

- 1.3. Because this is the first time you are running the application and there are no access phone numbers defined yet, the application will request the user to enter the first access phone's details. Enter the appropriate name and number that you would like to access this phone automatically in future as shown in Fig.2 and then press ok. You only need to input the phone number with a zero at the beginning, without the country code. The application itself smartly handles and considers the country code, when it is saving the number in the phone's memory.



Fig. 2

Please note you can modify the name and the number later on.

- 1.4. Now the main screen of the BiBUnit application should appear on your phone's display as shown in Fig.3.

In this screen you will see that the automatic access to this BiB-Phone is restricted (in red colour), only the phone number that you defined in 1.3 above can automatically access this phone with a video call.

The initial Set-up process is now complete.



Fig. 3

2. Registering the BiBUnit application:

When you purchase the BiBUnit application, you will receive a registration key. This key is generated only based on the IMEI number of the phone that you have submitted during your purchase request. (Please refer to the "Installation Instruction" (Ref: DOC-0307209) document for more details).

- 2.1. If you have not registered the application yet, and your trial period is expired, a message would pop up on your mobile phone screen, indicating you would need to register your application as shown in Fig 4. The application will terminate automatically if it is run after the trial period, or used to answer video calls, until you have entered a correct registration key here, and pressed **Ok**!



Fig. 4

- 2.2. If you are using the application within its trial period, but you have already obtained the registration key and wish to fully register your application now, you will need to select "**Options**" in the bottom left of the main screen in Fig. 3. This will bring up a menu as you see in Fig 5. If you select "**Register**" it pops up the screen shown in Fig. 4 that would allow you to enter your registration code and press "**Ok**" to complete it.



Fig. 5

Please ensure you enter the correct registration code. After entering the code as shown in Fig. 4, press **OK**. This will pop a message for a short period of time, saying the registration was successful as shown in Fig 6. The main screen in Fig. 3 will appear afterward.



Fig. 6

You have now successfully registered your BiBUnit application on your mobile handset.

Note: If you input a wrong Registration Key, it will pop an error message as shown in Fig 7, and shows the main screen in Fig 3. (If your application is expired, and you input a wrong code, the application will exit).



Fig. 7

3. Change Callers:

You can Add, Modify or Delete the callers name and phone numbers by selecting "Change Callers" option from the "Options" menu in the main screen, as shown in Fig. 8.

Note: The "Register" Option in the "Options" menu will not be available anymore when you have fully registered the BiBUnit Application on your mobile handset (i.e. as explained in Section 2).



Fig. 8

- 3.1. After selecting the "Change Callers" from the "Options" menu in Fig. 8, a list of registered Access Phones appear on the screen, as shown in Fig. 9. These numbers can do video calls to this phone and the BiBUnit application would automatically answer their calls. This depends on how many names you have registered before. For example here there is only one name in the list.



Fig. 9

Because there is only one registered name within this section (Done in step 1.3, Fig. 2), you will only be able to modify its details when you select the "Options" menu. The delete option will not be available when there is only one registered user on the list. You also have "Add new caller" option in this menu.



Fig. 10

- 3.2. If you select the "Modify" option, the name and the number of the selected user will be displayed on the screen to allow you to modify them, if necessary. You will need then to press "Ok" to save it, or "Cancel" to exit without saving it.

Please note the application will warn you if you do not enter a valid phone number after pressing "Ok" button. The phone number should be more than 8 digits.



Fig. 11

- 3.3. If you select **"Add new caller"** from the menu shown in Fig. 10, you can add the name and the number of extra Access-Phones to this BiB-Phone as shown in Fig. 2. There is no limit on the number of the names that you can add here as shown in Fig. 12. You can scroll up and down with the navigation keys on your mobile phone to see the list.



Fig. 12

- 3.4. After adding the second caller into the list, you will see a new **"Delete"** option available within the **"Options"** menu in the **"Change Callers"** section. You can now delete any caller from the **"BiB Access Phones"** callers list by selecting this option as shown in Fig. 13.



Fig. 13

- 3.5. Within the **"Change callers"** section, select a name that you wish to delete from the list, and then select the **"Delete"** option from the **"Options"** menu as shown in Fig. 13. A warning will pop up to ensure if you really want to delete the selected name from the callers list as shown in Fig. 14. Press **"Yes"** to delete or **"No"** to cancel it.



Fig. 14

4. Access Type:

The BiBUnit application can be used only to answer the video calls from the registered access phones in the previous section. This is referred as **"Restricted access"** and the application is set to this setting as default when you install it originally. This is shown in the main screen, when you run the BiBUnit application as shown in Fig. 15.

You can disable this restriction, and allow anyone to automatically connect, when they do a video call to your BiB-Phone.



Fig. 15

4.1. Select **"Options"** from the main screen (Fig. 15.), then select **"Access Type"**. This provides two options as shown in Fig. 16.

4.2. Select **"Restricted"** to provide automatic access for incoming video calls only to the registered users in the **"Callers list"** that is defined in Section 3.



Fig. 16

4.3. Select **"Un-Restricted (Public)"** option if you wish to provide access to anyone, regardless of if they are on the callers list in section 3. It is very critical to ensure that you wish to provide un-restricted access to everyone. This is the reason the application will prompt to remind you about your selection as shown in Fig. 17.

Press **"Yes"** to confirm or **"No"** to cancel it.

Note: if you activate **"Un-Restricted (Public)"** access type on the BiB-Phone, you can still access **"Change callers"** section explained in Section 3; you can still manage the callers list, to add, delete or modify the access names, however the BiBUnit application would ignore the list of the access names, when there is an incoming video call, and automatically answers the call.



Fig. 17

4.4. By selecting any of the above two options, the application will show the selected option on the main screen, this setting will be saved by the application when the phone is switched OFF/ON again or when the BiBUnit application is run, as shown in Fig. 18.

Important note: It is strongly recommended to always use **"Restricted"** option to provide automatic access to a selected number of users that are defined in your **"Callers list"**.



Fig. 18

5. Auto-Run:

Some mobile phones are occasionally automatically Re-started . This means the phone is turned OFF and back ON again. In this case any application like BiBUnit that was running on the phone, will not automatically run anymore when the phone turns OFF and ON again. To solve this problem, "**Auto-Run**" option is provided to allow the phone automatically load and run BiBUnit application, whenever it is turned ON or even re-started.

This provides a peace of mind if your BiB-Phone is placed somewhere for days or months while it can re-start for any reasons, but you would like to access the BiB-Phone using your mobile phone (or any other registered Access-phone) at any time.

- 5.1. Select "**Options**" from the main screen (Fig. 3), and select "**Auto-Run**" as shown in Fig. 19.

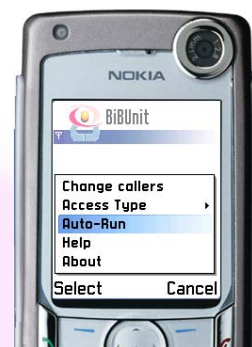


Fig. 19

- 5.2. Select "**Yes**" to **activate** Auto-Run.

Note: To de-activate Auto-Run, you must select "**Auto-Run**" as shown in Fig. 19, then select "**No**" in Fig. 20.



Fig. 20

- 5.3. Only if Auto-Run is activated, the "**Auto-Run**" text is displayed on the main screen as shown in Fig. 21.

This setting is also saved and whenever you exit and run the BiBUnit application again, your last settings are shown on the main screen.



Auto-Run Activated

Auto-Run De-activated

Fig. 21

Important note: It is strongly recommended to activate "**Auto-Run**" on your BiB-Phone all the time.

6. Help:

You can find some brief notes from the “**Help**” section from the “**Options**” menu available in the main screen (Fig. 3). This is shown in Fig. 22.

Note: The information in the help section of your BiBUnit application is brief and should be used as a quick reference only. For more detailed information, it is better to refer to this Users Guide.

- 6.1. Select “**Help**” from the “**Options**” menu in the main screen (as shown in Fig. 22). In this section you will find different tabs on top of the screen. You can use your **Left/Right** navigation keys to view the content of different tabs in this section, or use **Up/Down** navigation key to go up and down in a page within a specific tab.

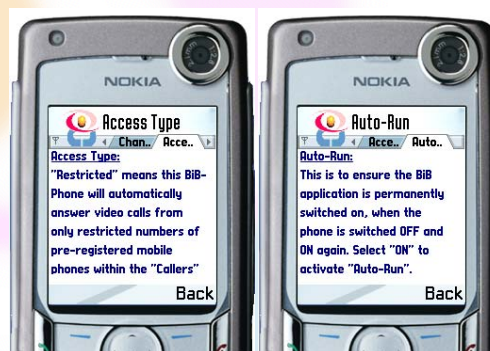


(i)

(ii)

Each tab contains information about:

- (i) General Specification.
- (ii) Change Callers
- (iii) Access Type
- (iv) Auto-Run



(iii)

(iv)

They are shown in Fig 23.

Select “**Back**” from the bottom of the screen to go back to the main screen.

Fig. 23

7. About:

If you want to find about the Technical details of the BiBUnit application regarding its version and some other information, select “**About**” from the “**Options**” menu in the main screen (i.e.Fig.3). This is shown in Fig. 24.

Press “**Back**” to return to the main screen.



Fig. 24

8. Recommendations:

It is recommended to apply following settings on your BiB-Phone, if you are going to leave it in a remote location:

- a. Always use "**Restricted Access**" within BiBUnit application for your phone.
- b. Set the BiBUnit to "**Auto-Run**".
- c. Activate **Auto-Lock** on your mobile handset and set up a PIN code to unlock it. This is done via **settings** section of your mobile phone: Exit BiBUnit software, then go to: "**Tools → Settings → Security → Phone and SIM**" and turn "**ON**" the "**PIN Code request**" in this section, and define a secret PIN code that only you can unlock the phone. Please note some mobile phone models might provide this setting in a different section (Refer to your mobile phones reference manual for more details.), Set its locking time to be very short like 10 seconds or 1 minute etc.

If your mobile phone is left in a remote location, it is possible that someone can take it and try to use it without your permission. If the phone is locked, then they cannot un-lock it, and also cannot access the BiBUnit application to modify its "**Access Type**" or "**Callers List**". This provides you extra security to prevent people from accessing your BiB-Phone without your authorisation.

- d. Setup your BiB-Phone to Silent or Meeting profile. This is to make your monitoring activity quietly. You must also check the regulation within your local authority to ensure you can do this. In some locations, by law, you may not be able to secretly monitor other people's activity, in which you would need to notify them in advance as explained in #f below. However always check your local authority regulations in this regard.
- e. Use BiB-Phone holders that are provided by BiBCOM to hold your BiB-Phone in its location. For more details contact Sales@BiBCOM.co.uk
- f. Always display a proper banner or plaque around the place that your BiB-Phone is installed. This is to inform people that you can monitor them at anytime. This is similar to using CCTV, where you would need to inform people (by law in most countries) who can be within the range of capturing their images by your BiB-Phone. You can purchase these banners from BiBCOM. Please contact Sales@BiBCOM.co.uk for more details.
- g. Connect a continues power supply to your BiB-Phone, if you are going to leave your BiB-Phone in a remote location for more than couple of days. The BiB-Phone does not use much power, except if it is continuously transmitting video calls to the Access-Phones.
- h. Please check BiBCOM's website regularly (www.BiBCOM.co.uk) for the list of latest applications and accessories available for your BiB-Phone(s). In case of any enquiries please contact: Sales@BiBCOM.co.uk

- i. Please keep your **“.sis”** files and all other supporting documents and the Registration key safe for future use. One Reg Key is issued only for the provided **IMEI** number of one mobile handset. Please note you can install the same **“.sis”** file on another compatible mobile handset and might be able to try it free of charge for a week. You may then decide to purchase the full license by obtaining a new Reg key for the new handset from BiBCOM's website (i.e. this would require the new phone's **IMEI** number). However it is always recommended to check our website for the latest version of the application.
- j. In some areas, you may not be able to see the 3G signal on your mobile phone screen. This does not mean that 3G network is not available in that area, while 3G network covers most UK and Europe (check your network provider's website). This is because your mobile phone has a dual band; This means if the 2.5G signal is slightly stronger than 3G in a location, the phone automatically selects 2.5G signal, and if 3G signal is slightly stronger than 2.5G, then 3G network is selected by your phone for communication. The only difference that it makes, is that you will not be able to do a video call, if 2.5G network is selected by your phone, while 3G network is still available in the area.

To be able to get around this problem, you would need to disable the dual band on your phone and only select the 3G network (this is usually referred as WCDMA). The switch from 2.5G to 3G suppose to be done in near future by the network providers when 2.5G network is abolished. However in the mean time you can do this by installing the other software that was included in the provided zip file to you, called: **“OperatorFtdwk39v7.sis”** (For Nokia 6630 & 6680 only). This is freeware software that allows you to set your phone to work either in single or dual band mode. After installing this application, you can find it in the phone's menu, and it is called: **“Test”**.

To be able to force your phone to select **only** 3G network, run the **“Test”** application on your phone. After running this application, you can see the sections numbers in small letters, on the top of the screen (just below the title **“Field test”**). You would need to use the navigation keys (**Up/Down**) to go to section (**81.1.**). It is recommended to use the **“UP”** key to go to this section quicker. In section **“81.1.”** of **“Field Test”** application, you will see following texts:

“Force protocol between GSM and WCDMA”

0-dual

1-GSM

2-WCDMA”

On your phone, usually **“0”** is selected (as dual band). To alter this to 3G network you need to select option **“2”**: WCDMA. To be able to do this, select **“Options”** from the bottom menu, and select **“Execute”** from the menu. Then you can input number **2** in the text box, then press **“OK”**. This automatically re-starts the phone. You have now successfully selected **WCDMA** (or 3G) network for your phone, and in this case, your phone always ignores the GSM (or 2.5G) network, and will only use the 3G





network anywhere you are. Please note this have no effect on the price of the calls that you make using this phone.

Please note if you experience that the 3G signal is really weak in a location, it is recommended to enable the dual band on your phone by selecting "0" or "1" as explained above in section "81.1." within the Test Field application. This is to allow you to use your phone for normal calls.

- k. **If you want to remove/un-install the BiB application from your BiB-Phone handset, remember first to delete all the name and number of the access phones that you have defined within the "Change Callers" menu (section 3 in this manual) in this application.**

9. Limitations:

The selected BiBUnit (v1.1) application is only installable on certain types of mobile phones (i.e. based on their operating systems). They are listed in the following table. However you can use any type of **3G mobile phones** as an Access Phone to do your video calls to this BiB-Phone handset.

Mobile Type	Mobile Model	Image
Nokia	6630	
Nokia	6680	
Nokia	N70	
Nokia	N90	

10. Technical Details:

Name:	BiBUnit
Software:	BiB-I
Version:	1.1
Application ID:	BiB-1B002-S60-2
Operating System:	Symbian OS S60 2 nd Edition Feature packs 2 & 3. (Symbian OS V8.x)
File to install:	BiBUnit.sis
File Size:	27 KB
Date:	March 2007

11. Contact Details:

Please contact us if you experience any difficulties.

BiBCOM Ltd.
Kroto Innovation Centre
University of Sheffield
North Campus
Broad Lane
Sheffield S3 7HQ
UK

Tel: +44 – (0) 114 – 222 4429

Fax: +44 – (0) 114 – 222 4421

Email: Support@BiBCOM.co.uk

Website: www.BiBCOM.co.uk