

1st May 2008, 18:33

#1

**swankyleo**  
Senior PosterJoin Date: Mar 2007  
Location: iPmart® forum  
Posts: 1,607  
Reputation: (55019)

## ★ MoreCaps v1.0 by Leftup - Change the capabilities of any EXE/DLL [FOR HACKED PHONES]

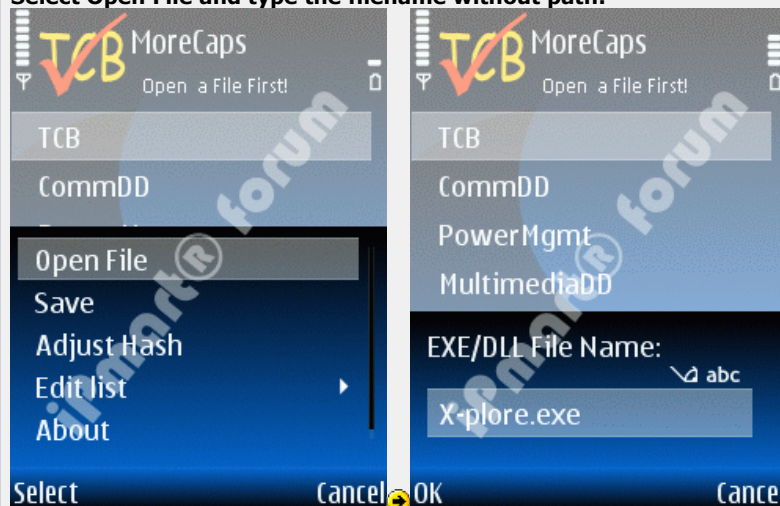
MoreCaps is a very useful tool by Leftup that allows you to change the capabilities of any EXE or DLL in the c:\sys\bin directory. It allows you to view the existing capabilities of the file before changing them. **This means that you don't have to wait no more for a allfiles version of your favorite file browser or any other app.** Just install the normal version and change the caps 😊

### Features:

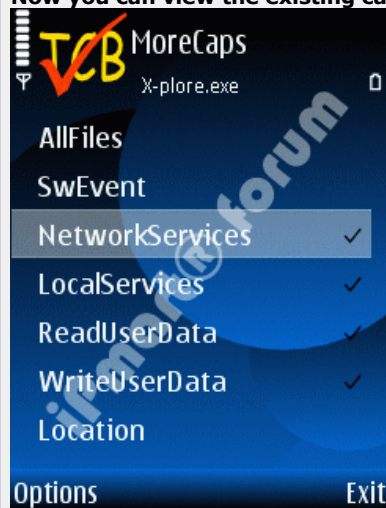
- Select/de-select multiple caps at once.
- Caps can be selected using the usual pen key or '0'
- The hash of the changed file gets updated automatically
- You can also manually update the hash using 'Adjust Hash'.

**Here is an example on how to assign the Allfiles cap to X-plore:**

**Select Open File and type the filename without path:**



**Now you can view the existing capabilities:**



**Select the AllFiles capability and from options select Save:**



Select

Cancel

Now exit from MoreCaps & **restart your phone** 😊 After restart X-plore will run with AllFiles capability that means you can view the system folders without disabling caps(CapsOff). Please note that you will not have write access though.

**Note: If the app you are modding is located in E: then after saving the permissions, manually update the hash using 'Adjust Hash' option.**

**Do not assign TCB and DRM to any program (unless you know what you are doing) otherwise the program will stop working.**

Attached Files

 [MoreCaps v1.0 by Leftup.rar](#) (33.1 KB, 822 views)

Last edited by swankyleo; 10th May 2008 at 11:50.



Quote

### Important Message! Dear Guest please read it!

To see the rest of this thread, please **LOGIN** or [REGISTER](#).

If you like our forum please [BOOKMARK](#) it.

To inform your friends about this interesting thread click below:

 Mail to...